

£875 PCM

Shenley Lane, London Colney AL2 1LL

Flat Share | 1 Bathroom

01727 761 816



www.attewellhardwickeandleahy.co.uk



Step Inside

Key Features

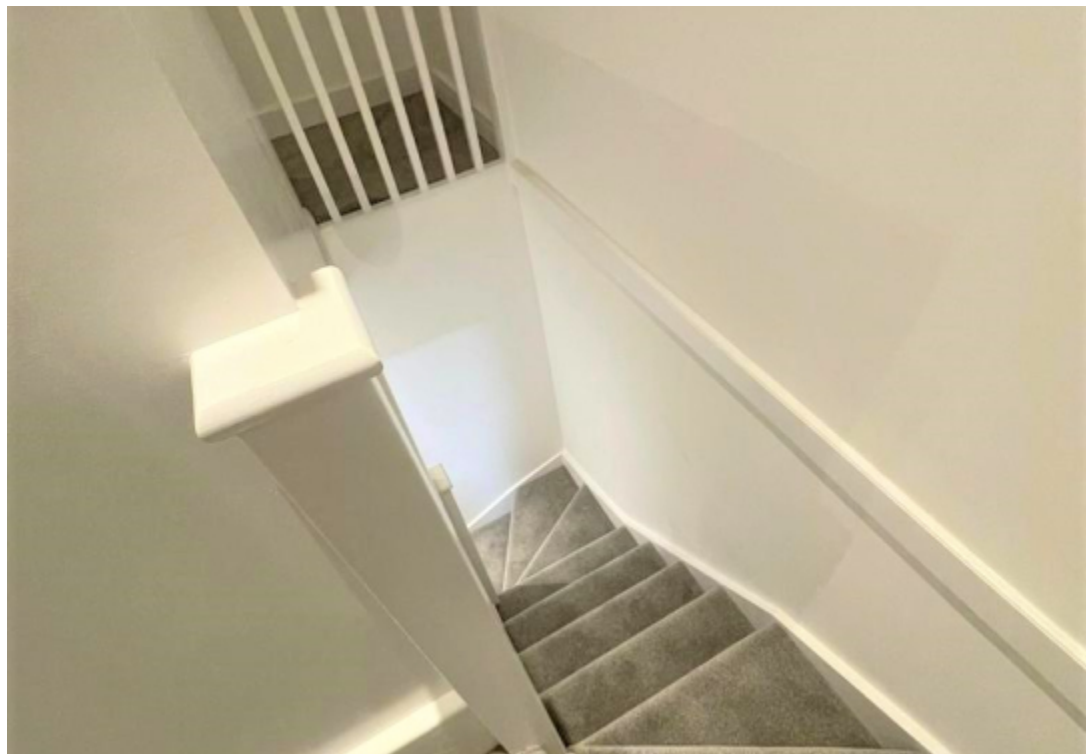
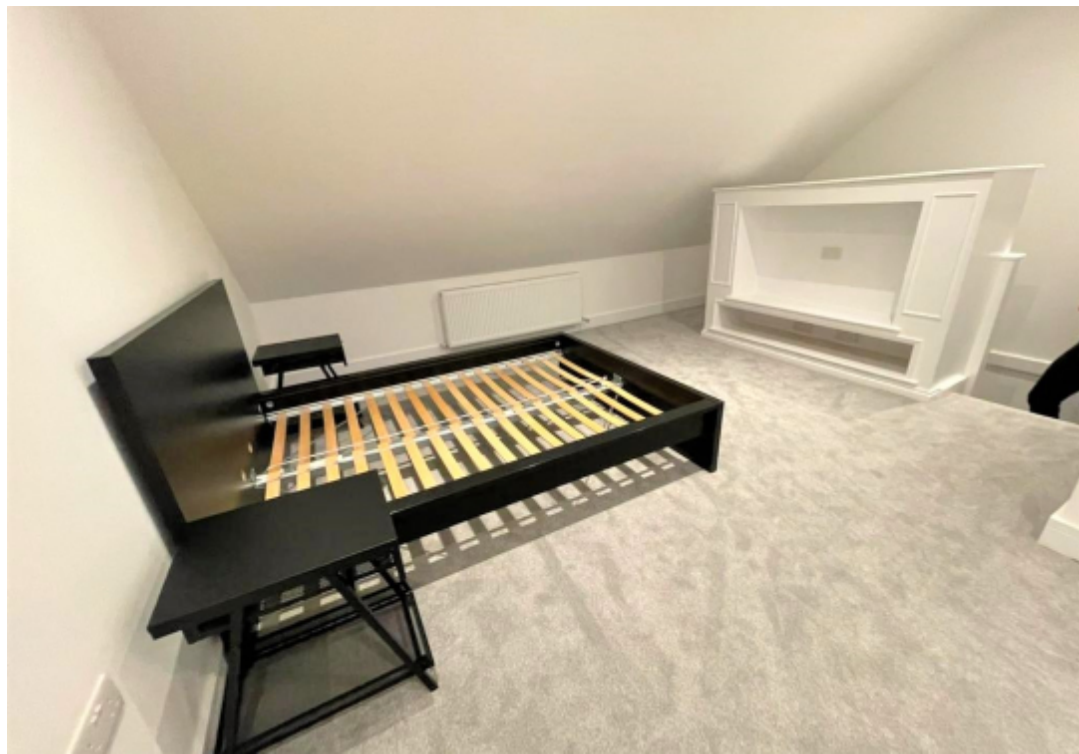
- Newly Refurbished Room
- En-Suite Shower Room
- Kitchenette
- Spacious Living Area
- Furnished as Seen
- Bills Included
- Available Immediately
- Well Equipped Kitchen on Ground Floor

Property Description

A beautifully refurbished house converted into four furnished en-suite rooms in this residential road overlooking open fields. This top floor room has the added benefit of a kitchenette with a window to the front of the property. The furnishings compliment the space perfectly with a desk and chair, double bed with bed-side tables, mirrored wardrobe and chest of drawers and a bespoke TV/console unit. The room is accessed via private stairs from the first floor. On the ground floor is a high quality kitchen with an allocated kitchen cupboard for each room, as well as additional storage, a washing machine, dryer, dishwasher, cooker, hob and fridge/freezer. Allocated parking can be provided for a small additional charge. **BILLS INCLUDED** (council tax, water, gas and electricity). **AVAILABLE NOW. FURNISHED.**

Main Particulars

A beautifully refurbished house converted into four furnished en-suite rooms in this residential road overlooking open fields. This top floor room has the added benefit of a kitchenette with a windows to the front of the property. The furnishings compliment the space perfectly with a desk and chair, double bed with bed-side tables, mirrored wardrobe and chest of drawers and a bespoke TV/console unit. The room is accessed via private stairs from the first floor. On the ground floor is a high quality kitchen with an allocated kitchen cupboard for each room as well as additional storage, a washing machine, dryer, dishwasher, cooker, hob and fridge/freezer. Allocated parking can be provided for a small additional charge. **BILLS INCLUDED** (council tax, water, gas and electricity). **AVAILABLE NOW. FURNISHED.**



Telephone: 01727 761 816



www.attewellhardwickeandleahy.co.uk