



£1,375 PCM

Everard Close, St Albans AL1 2BZ

Apartment | 1 Bedroom | 1 Bathroom

01727 761 816

A | H Attewell & Hardwicke
The Letting Specialists

www.attewellhardwickeandleahy.co.uk



Step Inside

Key Features

- Good Size Entrance Hall
- Open Plan Living Room/Kitchen
- Bedroom
- Stunning Shower Room
- Allocated Underground Parking Space
- Video Entryphone System
- Lifts to all Floors
- Quality Appliances
- Fully Furnished

Property Description

A beautifully presented, one bedroom first floor apartment in this modern development. AVAILABLE 9TH DECEMBER. FULLY FURNISHED.

Main Particulars

A beautifully presented one bedroom apartment located on the first floor of this modern development. The property has been decorated beautifully and the level of furnishing and equipment means the property is move in ready. Briefly comprising of a bright, open plan living room/kitchen to include all integrated Smeg appliances, a lovely bedroom and a stunning shower room. Further benefits include underfloor heating, lift access and an allocated parking space. Abbott House is situated to the bottom of Holywell Hill opposite Westminster Lodge and the historic Verulamium Park, around the corner from St. Albans Abbey Flyer and the many amenities of St. Albans City Centre is just a short stroll away. Excellent roadlinks to the M1 and M25 are also close by. FULLY FURNISHED. AVAILABLE 9TH DECEMBER.

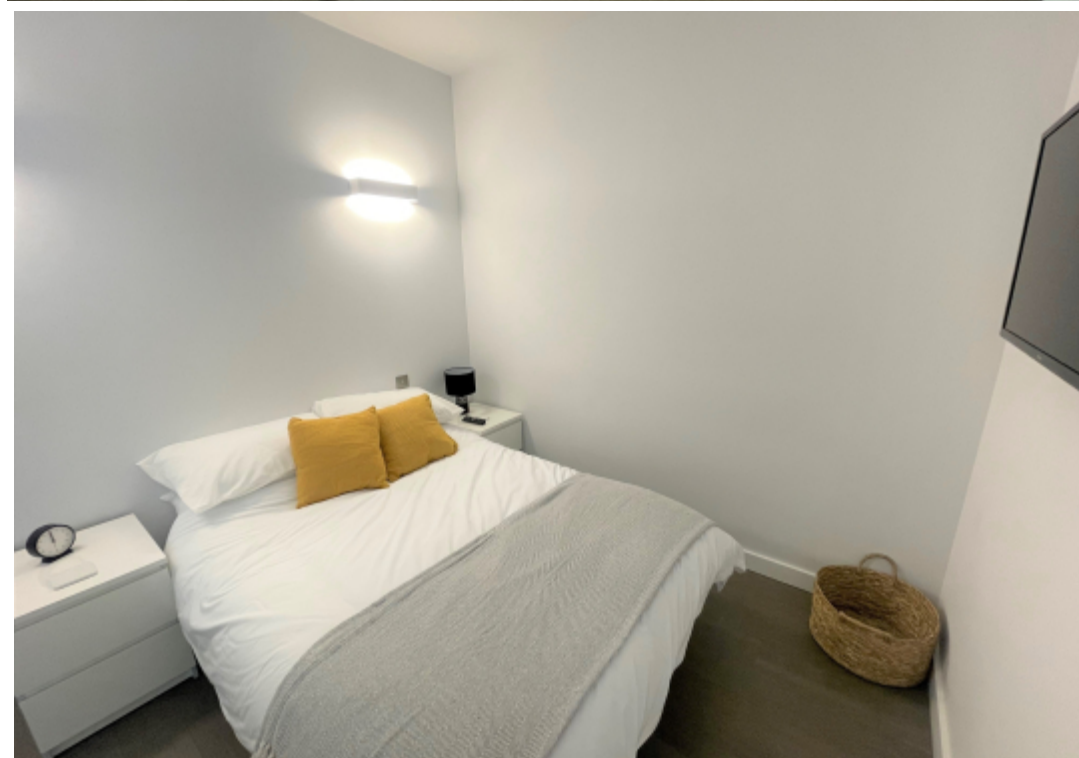




Image not found

This floorplan is for illustrative purposes only and the location of doors, windows and other items are approximate.

Telephone: 01727 761 816

A | H Attewell & Hardwicke
The Letting Specialists St. Albans

www.attewellhardwickeandleahy.co.uk